

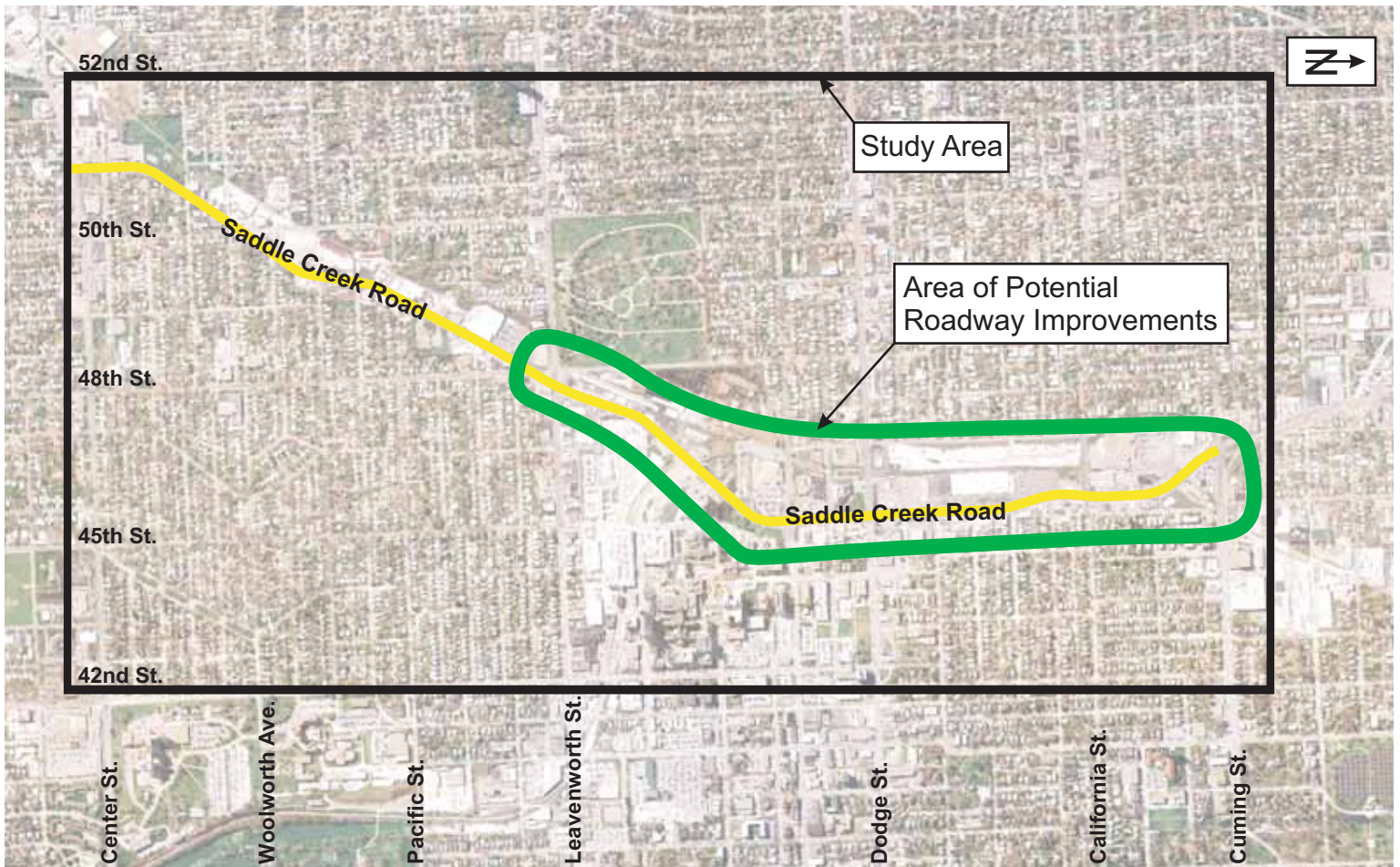


Saddle Creek Road Relocation Study

Welcome to the first public meeting for the Saddle Creek Road Relocation Study!

The City of Omaha and the University of Nebraska Medical Center (UNMC) are studying potential options for relocating Saddle Creek Road between Leavenworth Street and Cuming Street. The area for potential roadway improvements is shown in green below. The Study Area for potential impacts of the project is shown below in black and is generally bounded by Cuming Street on the north, Center Street on the south, 42nd Street on the east and 52nd Street on the west.

Saddle Creek Road Relocation Study Area



Why is the project needed?

The purpose of the Project is to:

- Provide safe, reliable and efficient movement of vehicles and pedestrians to and through the study area.
- Reduce roadway flooding of Saddle Creek Road.

Other benefits of the Project include:

- A more contiguous property to support future UNMC campus expansion.
- An improved residential and commercial urban community.



Saddle Creek Road Relocation Study



Flooding along Saddle Creek Road.

When will the Project be completed?

The Saddle Creek Road Relocation Study has just begun. The first step of the project is to determine if it is feasible to relocate Saddle Creek Road. After the Feasibility Study has been completed there are several additional steps that must be completed before construction. The major steps for the project are:

- Feasibility Study (Currently Underway)
- Environmental Studies
- Preliminary Design
- Final Design
- Right-of-Way Acquisition
- Construction



Historic bridge and limited pedestrian access.

Funding has only been obtained for the Feasibility and Environmental Studies. If the project is feasible, additional funding is needed for design, right-of-way acquisition, and construction.

Visit Us on the Web!

Project information from the first public information meeting is available on the City of Omaha and Destination Midtown websites at the following addresses:

www.ci.omaha.ne.us (see News Bulletins)
www.destinationmidtown.org/saddlecreek

We Want Your Input!

If you have questions or would like additional information regarding the Saddle Creek Road Relocation Study, please contact:

Leanne Zietlow
HDR Engineering
8404 Indian Hills Drive
Omaha, NE 68114
(402) 926-7186
saddlecreek@hdrinc.com

Derek Miller
City of Omaha
(402) 444-5210
dlmiller@ci.omaha.ne.us

Ken Hansen
UNMC
(402) 559-5301
hansenkl@unmc.edu

Tawanna Black
Destination Midtown
(402) 233-7142
tblack@destinationmidtown.org

Stay Tuned!

A second public meeting will be scheduled for late spring/early summer 2007. Improvement alternatives and study findings will be presented at this meeting.