

# Saddle Creek Road Relocation Study

*Welcome!*



# Format of the Meeting

- Open House
- Brief presentations at 6:15 pm and 7:15 pm
- Project information throughout the room
- Question/Answer with staff
- Comment forms



# Corridor History

- Defined by early railroads
- Industry and housing followed
- Saddle Creek later enclosed
- Two-lane road – commercial strip
- Four-lane road – large scale commercial
- Railroad abandonment
- Industrial decline



# Saddle Creek's "Neighbors"

- Gifford Park Neighborhood Association
- Joslyn Castle Neighborhood Association
- Ford Birthsite Neighborhood Association
- Field Club Homeowners League
- Park East Neighborhood Association
- Blackstone Neighborhood Association
- Gold Coast Neighborhood Association
- Leavenworth Neighborhood Association
- Morton Meadows Neighborhood Association



# Study Background

DESTINATION **MIDTOWN**  
A Vision for the Future of Midtown Omaha

2004

HDR



UNMC FACILITIES  
DEVELOPMENT PLAN  
2006-2015

September 8, 2006



UNIVERSITY OF  
**Nebraska**  
Medical Center



A FIVE HUNDRED MILE-WIDE CAMPUS...

OMAHA

LINCOLN

KEARNEY

SCOTTSDALE

UNIVERSITY OF  
**Nebraska**  
Medical Center



# Saddle Creek Road Relocation Study

# Destination Midtown

## Recommendations:

- Enhance existing corridor to include additional landscaping
- Explore the feasibility of major reconstruction of Saddle Creek Road
  - An “On-Alignment” alternative
  - A “Relocation Alternative”



# UNMC Facilities Development Plan

## Elements:

- Western expansion of research facilities
- With or without relocated Saddle Creek Road
- Parkland, water feature, pedestrian and bicycle facilities
- Vibrant urban area



# Other Studies

- Combined Sewer Overflow Study
- Dodge Street Corridor Study

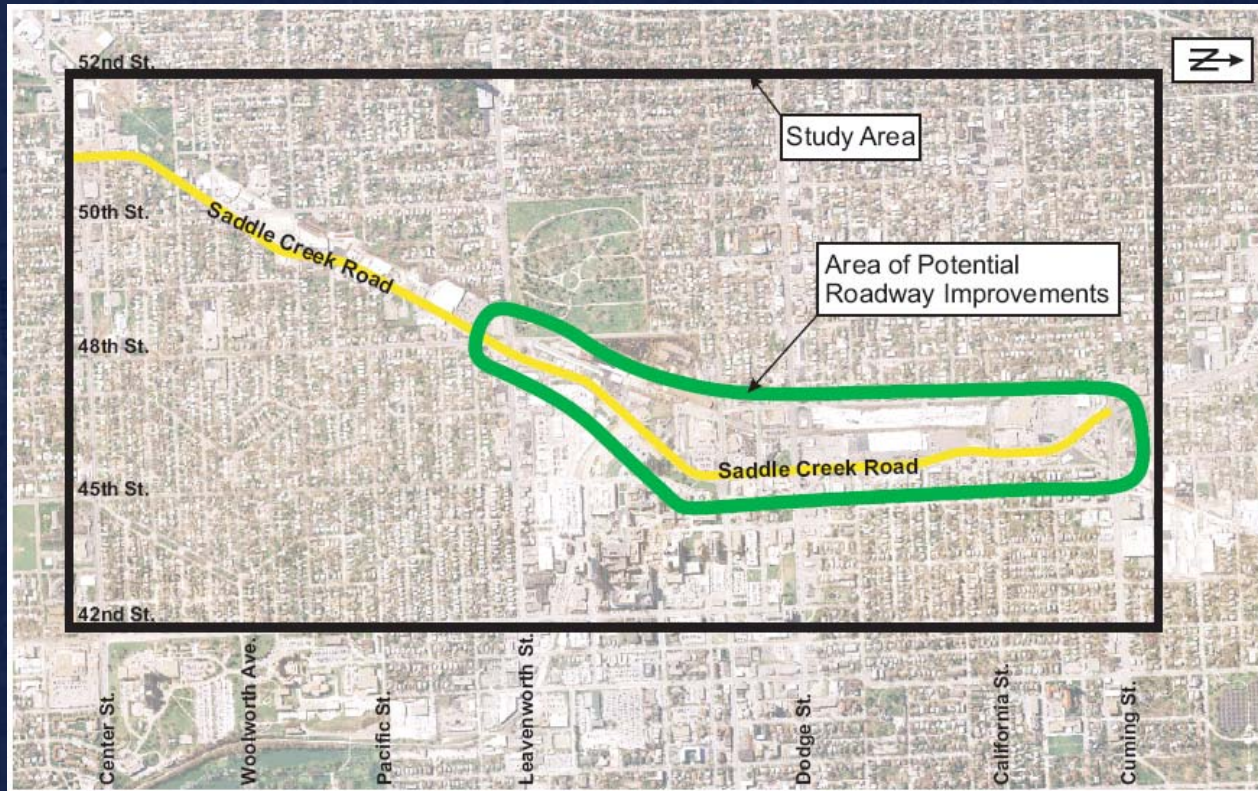


# Purpose of the Study

Investigate alternatives to the current alignment of Saddle Creek Road.



# Study Area



# Purpose and Need for the "Project"

- Provide safe, reliable, and efficient movement of vehicles and pedestrians to and through the study area
- Reduce roadway flooding of Saddle Creek Road



# Other Benefits

- More contiguous property to support future UNMC campus expansion
- An improved residential and commercial urban community



# Study Area Issues



# Study Area Issues



UNIVERSITY OF  
**Nebraska**  
Medical Center



## Saddle Creek Road Relocation Study

# Study Area Issues



# Study Area Issues



# Project Timeline

## Funded:

- Feasibility Study (currently underway)
- Environmental Study

## Future Funding:

- Preliminary Design
- Final Design
- Right-of-Way Acquisition
- Construction



# Study Participants

- Consultant Team
  - HDR Engineering, Inc.
  - RDG Planning & Design
  - SB Friedman & Company
  - Ehrhart-Griffin & Associates
- Stakeholder Committee
  - City of Omaha
  - University of Nebraska Medical Center
  - Nebraska Department of Roads
  - Papio-Missouri River Natural Resources District
  - Destination Midtown
  - Nebraska Medical Center



# Display Areas

- Project Description
- Existing Conditions
- Opportunities



# We want your input!

- Discuss with staff tonight
- Complete a comment form
- E-mail us ([saddlecreek@hdrinc.com](mailto:saddlecreek@hdrinc.com))
- Websites:
  - [www.destinationmidtown.org/saddlecreek](http://www.destinationmidtown.org/saddlecreek)
  - [www.ci.omaha.ne.us](http://www.ci.omaha.ne.us) (see news bulletins)
- Next Public Meeting

